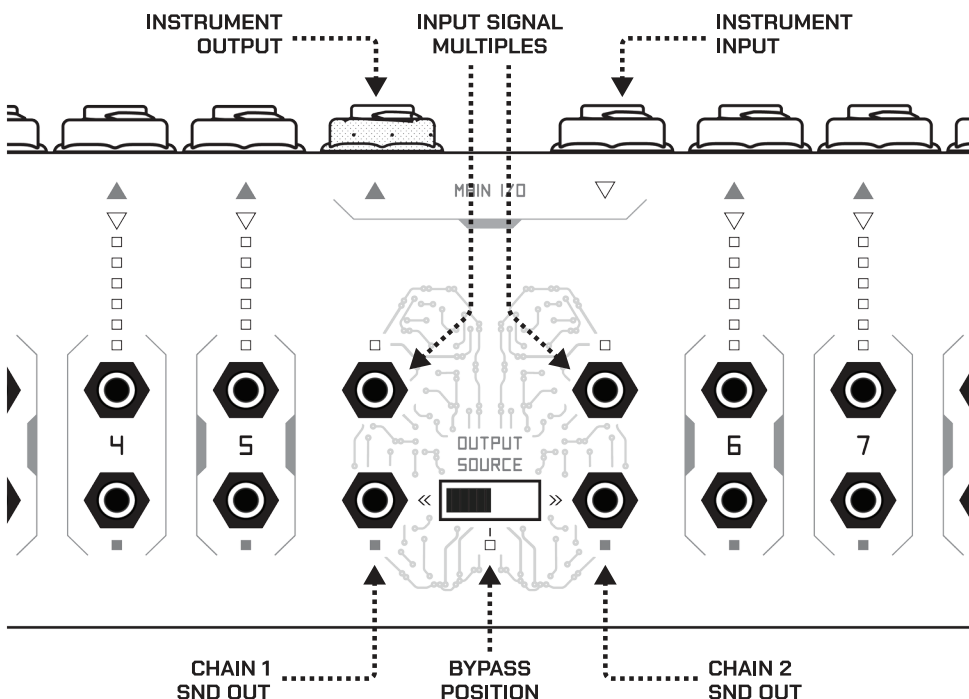


instrument channel



circuit configuration

MULTIPLE ALWAYS ACTIVE

By default, when one of the two effects chains is selected with the switch, the other **RCV** instrument signal multiple is disabled alongside its output **SND**. This is done to ensure that when patching, no clicks or pops will occur as long as the other chain is selected (or bypassed). However, this may be an issue if you wish to run two parallel effects chains from the two **RCV** jacks of the instrument channel while sending output to two destinations simultaneously. Maybe you want to mix or crossfade the chains, or to do some quick switching and catch the "tails" of a reverb or delay? In this case, you can use the **MULTIPLE ALWAYS ACTIVE** circuit jumpers inside the Patchulator Pro to reconfigure the circuit.

Remove bottom lid, first by removing the six rubber feet and then the screws on the bottom of the unit. Inside you will see the circuit jumpers (one for **Tip** and one for **Ring**). Simply swap both jumpers outward to the **ON** positions, and then replace the lid. Now both **RCV** multiples of the input signal will be active regardless of the switch position. Please note though, that you may get pops when patching even when the bypass position is selected.

patch tips

INTER-PATCHULATION

Patchulator Pro makes a great companion to the original Patchulator. The number of available channels can be expanded greatly this way, as patches can be extended between Patchulators, something we refer to as "Inter-Patchulation"!

PATCHING OTHER SIGNALS

Don't limit yourself to patching only audio signals. Patchulator Pro is capable of carrying and switching a myriad of analog signals! This includes control voltage modulation signals, expression pedals, and headphones to name a few.

Limited warranty

This product is guaranteed to be free of functional defects for a period of 180 days from original purchase date. Proof of purchase is required for any warranty claim. Return shipping costs are covered by Boredbrain Music within the first 30 days of purchase only. Products with obvious signs of abuse or that have been modified by the end user, may not be covered under this warranty, at the discretion of Boredbrain Music.

service and inquiries

If you experience a problem with your Boredbrain product, or just want to share something interesting with us, please contact us at the link below and be sure to include your name, original purchase date, and a description of the problem you are experiencing. Then just hold tight, as we return most inquiries within 48 hours. We want to work with you to resolve your issue as soon as possible. Thank you!

boredbrainmusic.com/contact

technical specs

- 22 x 1/4-in TRS jacks
- 24 x 3.5 mm TRS jacks
- 12 x 10-in TRS patch cables (3.5 mm)
- **Power:** None (passive)
- **Dimensions:** 10 in x 3 in x 2.3 in
- **Weight:** 22.5 oz (638 g)



PATCHULATOR PRO

10-CHANNEL PRO FX PATCHBAY

USER GUIDE



The Mini Patchbay Evolved

Patchulator Pro is an evolution of Boredbrain's iconic desktop and pedalboard patchbay, purpose-built for experimental signal routing of guitar pedals, effects, synths and more. The patchbay has ten individual effects channels, plus a main instrument channel capable of switching between two parallel effects chains or bypassing them entirely.

- Ten discrete send and return channels for effects and instruments
- Additional main instrument channel switchable between two effects chains
- TRS connections support stereo, mono, and balanced audio signals
- Includes twelve custom 10-inch mini patch cables (TRS)
- Passive design for routing all types of signals

Effects on Patch

Patchulator Pro's ten numbered channels are primarily used for pedals or effects processors, and allow chains of effects to be created on-the-fly using a few mini patch cables. First, the inputs and outputs of pedals and effects are connected to the send (gray) and return (black) 1/4-inch jacks on the rear of the patchbay. Then using the top 3.5 mm jacks labeled **SND** and **RCV**, signals can be routed freely through the effects channels to make a chain.

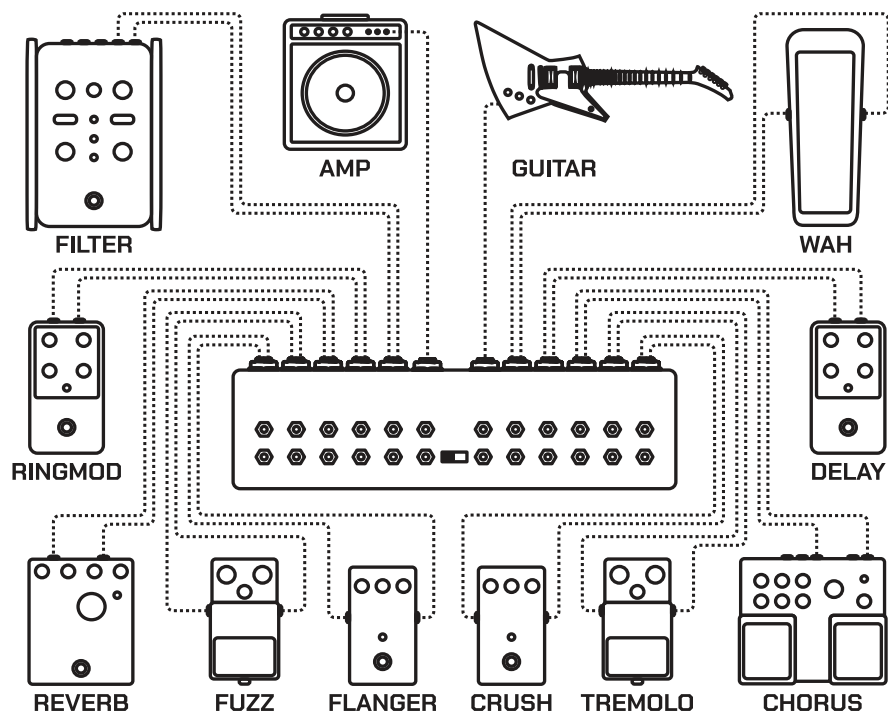
Alternatively, instrument sources (and destinations) can also connect to any of these ten channels for direct patch access if the dedicated **MAIN I/O** instrument channel is not enough.

Selectable FX Chain

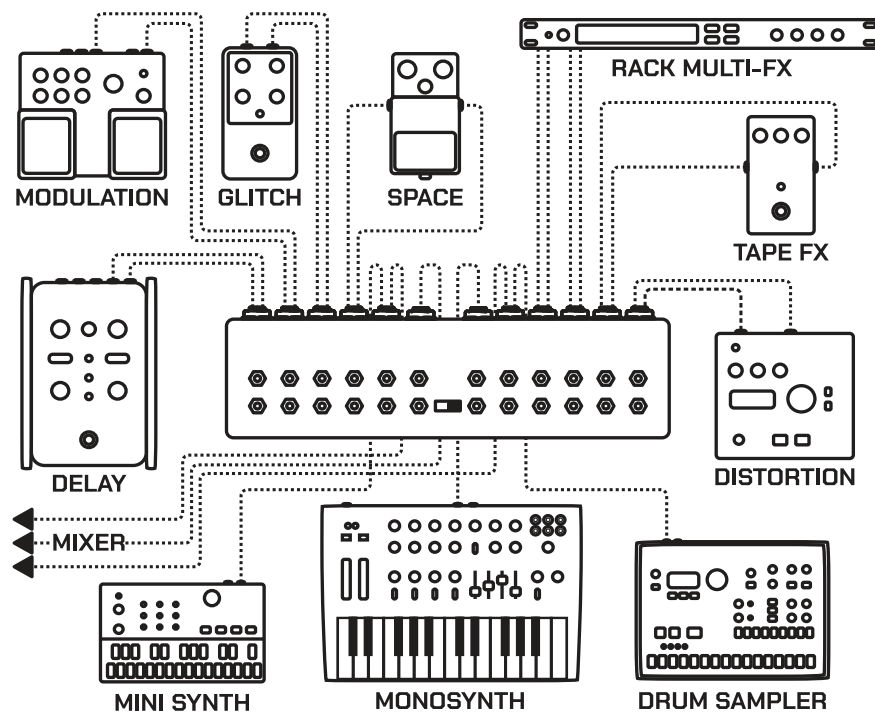
A new and useful feature of Patchulator Pro is its dedicated instrument channel, which allows for quick access to one of two effects chains.

The 1/4-inch jacks labeled **MAIN I/O** are the instrument channel's external input (black) and output (gray). Once connected, the input signal is available on top at both **RCV** patch points (multiples) within the instrument channel section. These copies can be used to create separate effects chains. Using the included patch cables, each chain is routed through any combination of the ten effects channels, then returned to its respective **SND** patch point.

pedalboard effects on patch



desktop instruments & effects



The **OUTPUT SOURCE** switch is used to select which chain is sent to the instrument channel's main output. Simply slide it all the way to the left or right. With the 3-way switch in the center **BYPASS** position, the instrument input is sent directly to the output, effectively bypassing both effects chains. This selection is useful to A/B an affected signal against the "dry" signal, and is a foolproof way to avoid pops while patching.

NOTE: Pops can also be avoided while patching by selecting the other chain, as long as the internal jumpers remain in their default **OFF** state (see Circuit Configuration).

Expert Interconnection

Patchulator Pro is purposefully configured with **TRS** (Tip, Ring, Sleeve) connections throughout to maximize compatibility with a range of gear and setups. All of the connections, circuitry, and the included patch cables are capable of carrying unbalanced mono, stereo, and/or balanced audio signals.

A single patch cable can carry two signals, thus eliminating the need to use two channels for a stereo patch. A single patch cable can also carry balanced audio signals like those typical of rack compressors, equalizers, and studio effects processors.

Each Patchulator Pro comes ready-to-patch with twelve premium Boredbrain patch cables, enough to use every patch point. The 10-inch cables of two colors (green and black) are customized to reach the full width of the patchbay and to differentiate between the two effects chains.

NOTE: Stereo pedals lacking TRS jacks may require Y-splitter adapters (insert cables).